

VIOLIN II

RHAPSODY FOR VIOLIN

William Neil

$\text{♩} = 40$

8

n \rightarrow *pp*

8

div.

15

sfp *sfp* *sfp* *sfp* *sfp* *f*

moving ahead slowly

A

20 A little faster $\text{♩} = \text{c. } 132$

pizz. *f* *f* arco *f* $>$ *p*

26

actual pitch

fp *p* $<$ *f* *p* $<$ *f* $\#$ $<$ *f*

3

33

pizz. *f* div. *p* \rightarrow *ff* *fff* 3 3 3 3 3 3 3 3 non div. *ff*

37

2 $\text{♩} = \text{♩}$ pizz. *p* *ff* div. arco *f* \rightarrow *ff* 3

44

$\text{♩} = \text{♩}$ $\text{♩} = \text{♩}$ non div. *pp* \rightarrow *ff* \rightarrow *pp* a2

49

$\text{♩} = \text{♩}$ *f* \rightarrow *p* pizz. *ff* **B** A little faster $\text{♩} = 144$ arco 3 3 2

VIOLIN II

55 div. pizz. non div. arco

60

C

66

arco non div. pizz.

74

arco div.

D

81

div. pizz.

86

arco

E

Much slower ♩ = 80

91

95

Twice as fast ♩ = ♩

100

♩ = ♩ ♩ = 52

105

f *p* *ff*

F

108 Slower $\text{♩} = \text{♩} = \text{c. } 52$

sfppp *f* *p* *f* *p*

114

f *p* *f* *p* *ff* *p* *ff* *pp* *slowing down* *attacca*

122 $\text{♩} = 108$

f *p* *f* *ff*

127

ff

133

pp *f* *pizz.*

140

f *arco*

146

f

VIOLIN II

151 **G** $\text{♩} = \text{♩}$ non div. ff sfpp slowing down ff sfpp $\text{♩} = 108$

156 $\text{♩} = 108$ bounce bow slowing down

161 non div. bounce bow sfpp f

167 **H** ff p sfpp 2 2

176 $\text{♩} = \text{♩}$ **I** pizz. f arco on beat sfpp f

182 pizz. p pp f arco tr sfpp non div. f ff

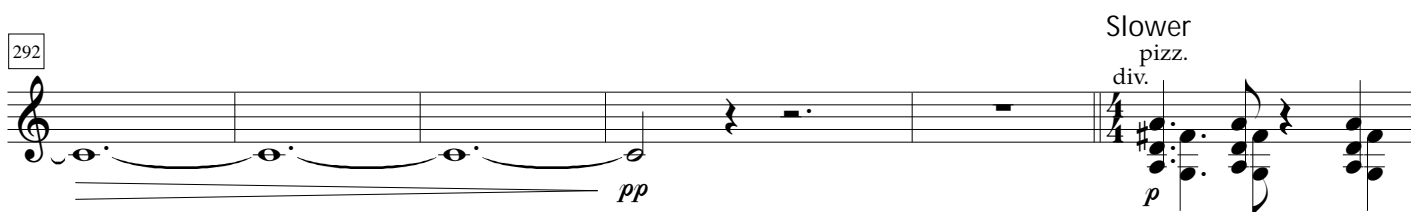
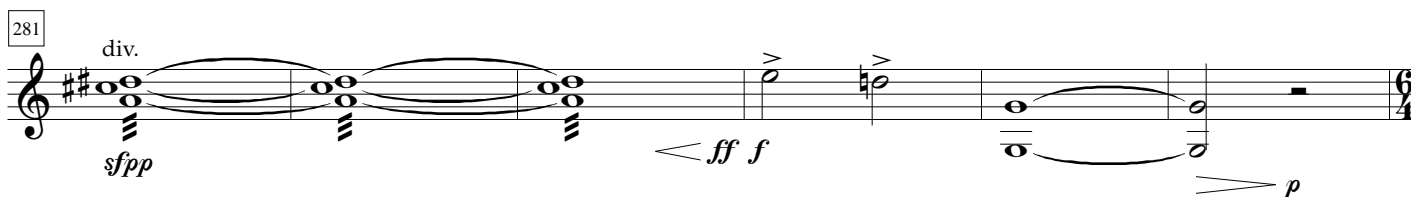
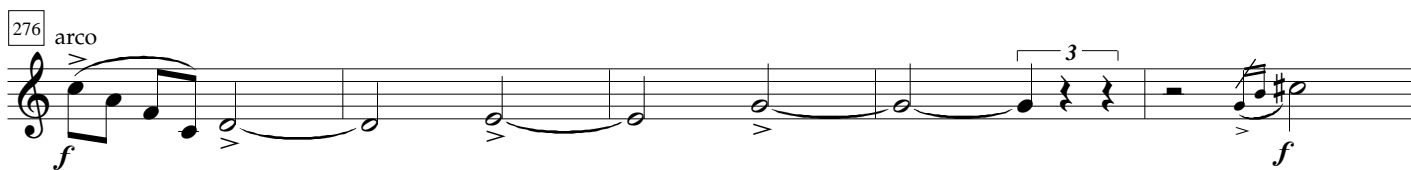
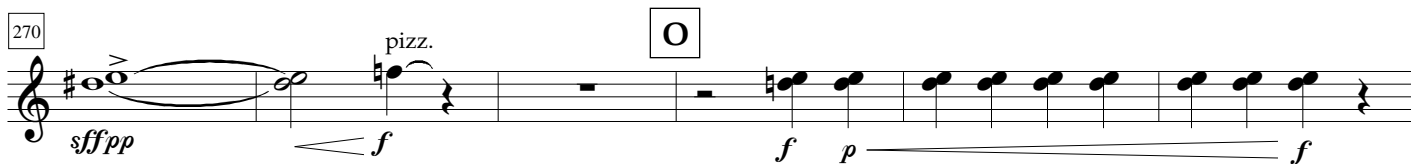
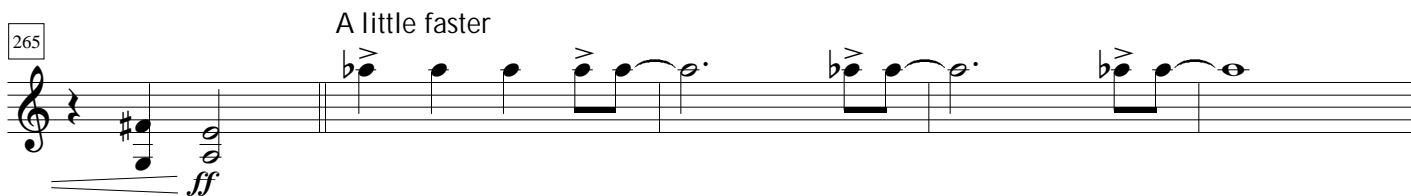
187 tr sfpp div. a3 sfpp sfpp sfpp sfpp f ff

192 pizz. arco f p pizz.

197 arco f ffpp ff pizz.

VIOLIN II

[illegible]

N260 $\text{♩} = 108$
non div.

308

ff f ff f p f

313

ff

319

p ff f

Q Faster

325

ff Slower

R

331

ff fff slowing down f p

340

p fp

S

345

ff p sub. ff

352

mp p gradually becoming faster

357

f

VIOLIN II

364 non div. T Slower ♩ = 88

ff *fffpp*

370

p *f* *p* *p*

376 non div. 3 3 2 gradually slowing *p* *f*

♩. = 40

383 *ff* *p*

390 U Cadenza

V ♩ = 108 pizz. *f*

401 ♩ = ♩ arco *f* *fff* *p*

VIOLIN II

405 *fff* *p* *fff* *ffff*

W

410 Slower $\text{♩} = 48$
10 div. *p* *f* *p*

Hn. I, II *f*

424 *f* *p* *ff* *pp*

X

429 div. pizz. 5

438 moving ahead *sffpp* *ff* slowing down

arco

Y

444 Slower $\text{♩} = 40$
div. *sffp* *f* *sfp* *ff*

449 non div. *sffp* *f* *ff*

453 Cadenza *fff* slowing down

VIOLIN II

455 $\text{♩} = 84$
non div.

pp *ff* *pp* *ff*

460

465 Faster $\text{♩} = 84$
non div.
slap pizz.

col legno

8

476

div.

p *ff* *sfzp*

481

pizz.

485

non div.

$\text{♩} = \text{♩}$

ff *p* *fff* *fff*